

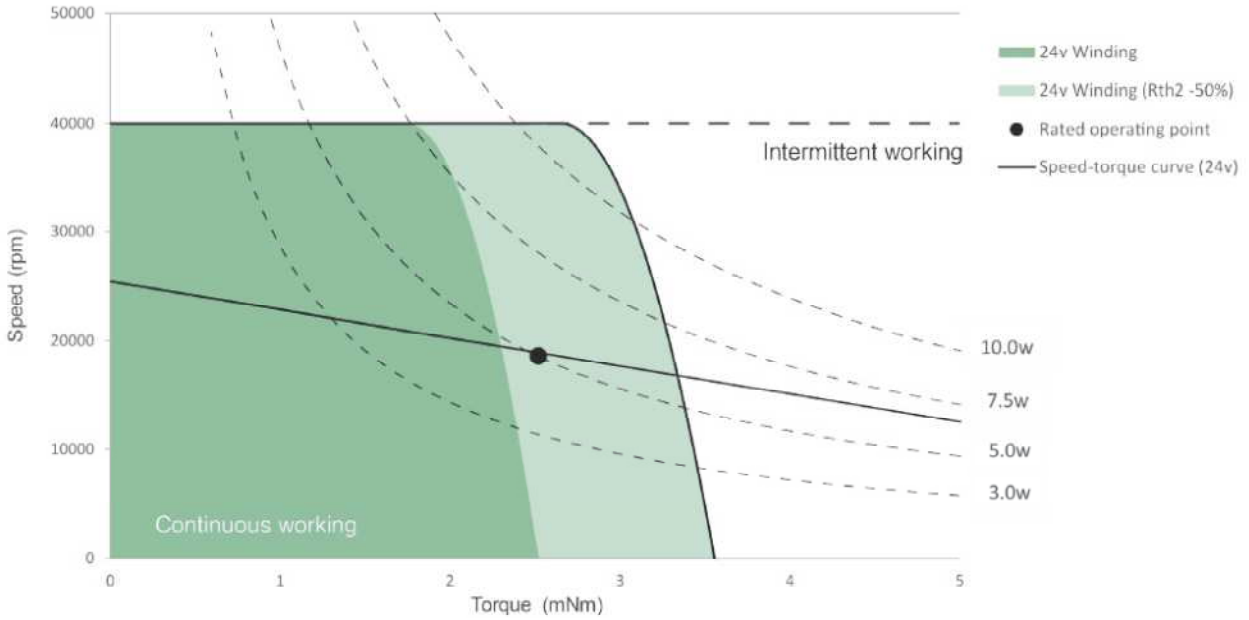
TSU13026 Ø13mm 5/7.5W

Motor Data		Part Numbers				
		TSU13026H06	TSU13026H09	TSU13026H12	TSU13026H18	TSU13026H24
Nominal voltage	V	6	9	12	18	24
No load speed	rpm	24900	27600	24600	25100	26100
No load current	mA	130	115	76	54	49
Nominal speed	rpm	17000	20100	16900	17200	18600
Max. continuous torque	mNm	2.58	2.81	2.69	2.62	2.53
Max. continuous current	A	1.27	1.02	0.65	0.44	0.34
Stall torque	mNm	8.9	11.8	9.7	9.6	9.9
Stall current	A	3.92	3.78	2.09	1.41	1.14
Max efficiency	%	65	69	66	66	67
Resistance (phase-phase)	Ohm	1.53	2.38	5.74	12.8	21.0
Inductance (phase-phase)	mH	0.019	0.036	0.081	0.174	0.285
Torque constant	mNm / A	2.27	3.13	4.66	6.85	8.64
Speed constant	rpm / V	4200	3055	2050	1395	1105
Speed/torque gradient	rpm / mNm	2826	2326	2526	2608	2685
Mechanical time constant	ms	5.74	4.73	5.13	5.30	5.46
Rotor inertia	gcm ²	0.194	0.194	0.194	0.194	0.194

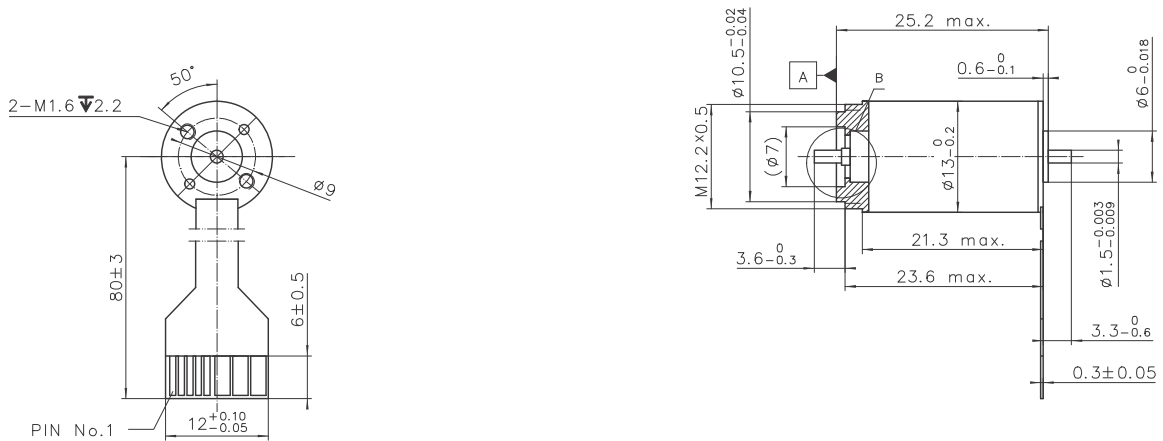
Specification		
Bearing		Ball bearing
Max speed	rpm	40000
Axial play	mm	0..0.05
Radial play		Preloaded
Max axial load (dynamic)	N	1
Max. force for press fits (static)	N	10
Max radial load (5mm from flange)	N	4
Ambient temperature	° C	-40~+100
Max winding temperature	° C	155
Thermal resistance		
Housing - Ambient	° C / W	32.0
Winding - Housing	° C / W	3.69
Thermal time constant		
Motor	s	250
Winding	s	0.58
Number of pole pairs		1
Number of phases		3
Weight	g	19

Combination
Gearbox PG13C Ø13mm 0.3Nm 16:1-425:1 Page 43
Encoder Please contact local sales.
Option FPC / Cable With hall sensor / Sensorless

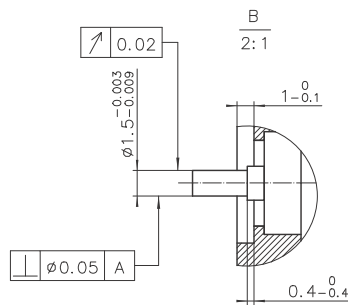
Operating Range



Dimension



PIN No.	Signal
1	4.5-24VDC
2	Hall IC 3
3	Hall IC 1
4	Hall IC 2
5	GND
6	Winding 3
7	Winding 2
8	Winding 1



TSU13026Hxx-S001